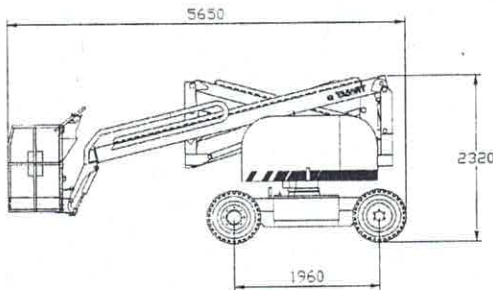
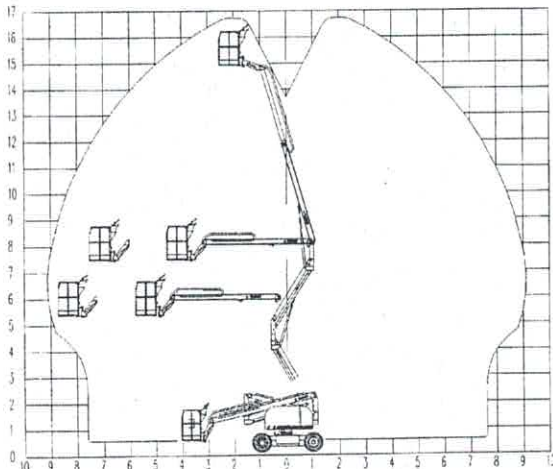


## STANDARD FEATURES:

1. Solid durable steel construction.
2. Hatz Silent Pack 23 Kw (32hp)  
Air cooled diesel engine
3. Digital electro proportional controls.
4. Oil immersed fail safe brakes.
5. Powered platform rotator.
6. Steel platform 0.76 x 1.52m (30 x 60")  
(Aluminum is an option).
7. Hydraulic self-levelling platform.
8. Manual Emergency power system.
9. Multi-axial slope sensor.
10. Monofilled skid steer tyres.
11. 110V AC or 220V AC cable to platform.
12. Flashing amber beacon.
13. Hourmeter.
14. Travel alarm.
15. Tie down/lifting lugs.

## TECHNICAL SPECIFICATION



Maximum working height	16.8m (55')
Maximum platform height	14.8m (48' 6")
Maximum safe working reach	9.1m (29' 10")
Maximum safe working load	225kg (500 lbs)
Outside turning radius	5.5m (18')
Ground Clearance	0.28m (11")
Stowed Dimensions	Height 2.5m (8' 2") Width 2.2m (7. 2") Length 5.8m (19')
Gradeability on hard surface	17° / 30%
Travel speed stowed	5km/hr (3mph)
Travel speed elevated	0.75 km/hr (0.5mph)
Noise emission	72dBa@3m
Max wheel loading	2950kg (6500 lbs)
Maximum gross weight	7100kg (15620 lbs)

SUPPLIED BY:

OPTIONS: Work light to platform  
Air line to platform

We reserve the right to amend these specifications at any time without notice.  
Our standard machine is covered by a 12 month written warranty applicable to the particular product and sale. We make no other warranty, expressed or implied.

**TEREX AERIALS LIMITED**

Courtstown Industrial Park • Little Island, Cork IRELAND • (353) 21 353011 • FAX: (353) 21 353368

simple, available and cost effective