

# Electric Series

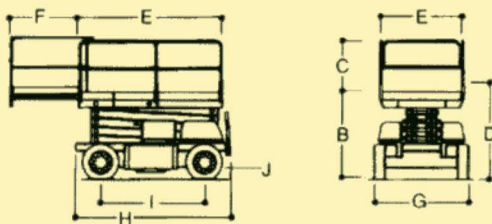
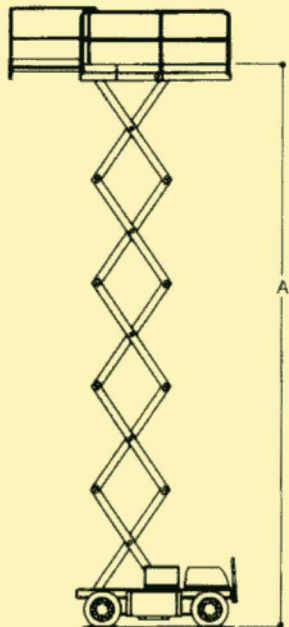
## ELECTRIC DRIVE SCISSOR LIFTS



3369electric  
3969electric



# 3369 electric



## DIMENSIONAL DATA

A. Platform Height Elevated	10.06 m (33 ft.)
B. Platform Height Lowered	1.49 m (4 ft. 11 in.)
C. Railing Height	1.12 m (44 in.)
D. Overall Height (rails folded down)	1.85 m (6 ft. 1 in.)
E. Platform Dimensions	1.55 m x 2.69 m (61 in. x 106 in.)
F. Front Deck Extension (standard)	1.23 m (4 ft.)
G. Overall Width	1.80 m (69 in.)
H. Overall Length	3.02 m (9 ft. 11 in.)
I. Wheelbase	1.98 m (77 in.)
J. Ground Clearance	0.12 m (5 in.)
Capacity	455 kg (1,000 lbs.)
Capacity on Deck Extension	165 kg (365 lbs.)
Lift/Lower Speed	75 sec up/60 sec down
Maximum Drive Height	8 m (26 ft. 3 in.)
Platform Material	steel tread plate
Gross Vehicle Weight*	3,680 kg (8,110 lbs.)
Max. Tyre Load	1,406 kg (3,098 lbs.)
Max. Ground Bearing Pressure Standard Tyre	4.1 kg/cm <sup>2</sup> (58 psi)

## CHASSIS

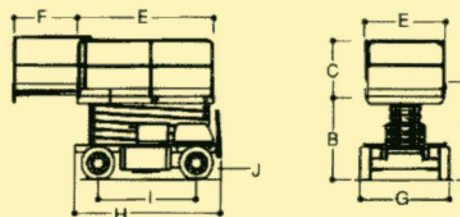
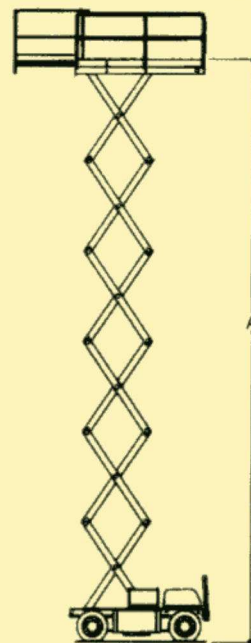
Drive Speed	4.8 kph (3.0 mph)
Gradeability	25%
Turning Radius (inside)	1.52 m (5 ft.)
Turning Radius (outside)	3.81 m (12 ft. 5 in.)
Tyres Size	205/75R 15
Tyre Type	foam filled
Brakes	spring applied electrically released discs

## POWER SYSTEM

Drive Motors	two series wound/fan cooled electric traction motors
Hydraulic Pump Motor	series wound motor
Batteries	8 x 6V, 245 amp hr
Hydraulic Pump	single gear pump
Hydraulic Reservoir Capacity	49.2 L (13 gal.)
Manual Descent	lever activated hand pump

\* Certain options or country standards will increase weight  
Specifications may change to meet country standards or with the addition of optional equipment.

# 3969 electric



## DIMENSIONAL DATA

A. Platform Height Elevated	11.90 m (39 ft.)
B. Platform Height Lowered	1.67 m (5 ft. 5 in.)
C. Railing Height	1.12 m (44 in.)
D. Overall Height (rails folded down)	2.01 m (6 ft. 7 in.)
E. Platform Dimensions	1.55 m x 2.69 m (61 in. x 106 in.)
F. Front Deck Extension (standard)	1.23 m (4 ft.)
G. Overall Width	1.80 m (69 in.)
H. Overall Length	3.02 m (9 ft. 11 in.)
I. Wheelbase	1.98 m (77 in.)
J. Ground Clearance	0.12 m (5 in.)
Capacity	340 kg (750 lbs.)
Capacity on Deck Extension	165 kg (365 lbs.)
Lift/Lower Speed	75 sec up/60 sec down
Maximum Drive Height	8 m (26 ft. 3 in.)
Platform Material	steel tread plate
Gross Vehicle Weight*	4,190 kg (9,238 lbs.)
Max. Tyre Load	1,452 kg (3,200 lbs.)
Max. Ground Bearing Pressure Standard Tyre	4.2 kg/cm <sup>2</sup> (60 psi)

## CHASSIS

Drive Speed	4.8 kph (3.0 mph)
Gradeability	25%
Turning Radius (inside)	1.52 m (5 ft.)
Turning Radius (outside)	3.81 m (12 ft. 5 in.)
Tyres Size	205/75R 15
Tyre Type	foam filled
Brakes	spring applied electrically released discs

## POWER SYSTEM

Drive Motors	two series wound/fan cooled electric traction motors
Hydraulic Pump Motor	series wound motor
Batteries	8 x 6V, 370 amp hr
Hydraulic Pump	single gear pump
Hydraulic Reservoir Capacity	49.2 L (13 gal.)
Manual Descent	lever activated hand pump

\* Certain options or country standards will increase weight  
Specifications may change to meet country standards or with the addition of optional equipment.

# PERFORMANCE FEATURES

## Standard Fold-Down Hand Rails

JLG's fold-down handrail system takes only minutes, utilising lockpins, and can be stowed without the needs for tools.



After entering the deck, simply disengage and fold the rear railing down to the deck....



....the front rail is then disengaged and folded in, along the left siderail...



....after front and rear railings are collapsed, main siderails can then be lowered....

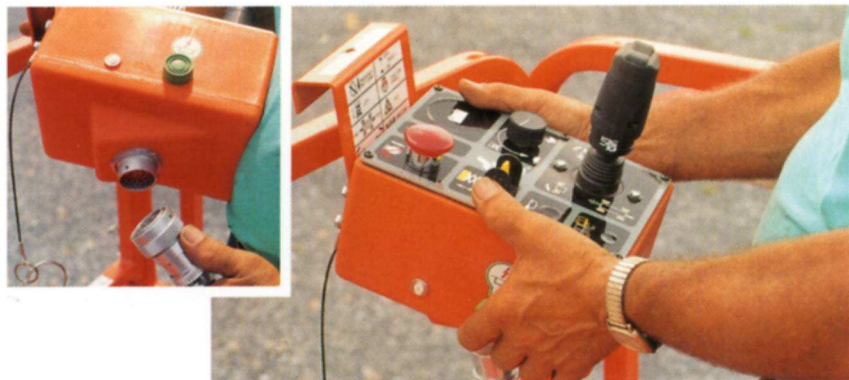


....after folding handrails down, machine height is reduced by 0.8 m (2 ft. 6 in.) and the unit can be driven using its moveable control box and 1.8 m (6 ft.) umbilical cord, enabling travel through standard double doorways.



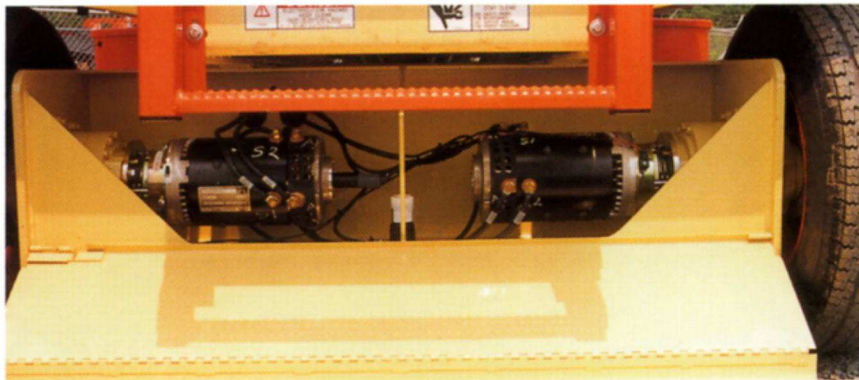
## Travel Through Standard Double Doorways

With an overall width of 1.75 m (5 ft. 9 in.) the 3369 electric and 3969 electric can pass through a standard double doorway. Following stowage of standard fold-down handrails, overall height is reduced by 0.8 m (2 ft. 6 in.), which also allows for improved clearance when transporting by truck.



## Moveable Platform Control Box

Platform controls are encased in a tough, polyethylene box, and feature easy-to-identify graphics. The control box, located on the front rail for travel, is moveable along the top handrails for increased worker productivity. It can also be removed via a quick disconnect coupling, for added security against unwanted use.



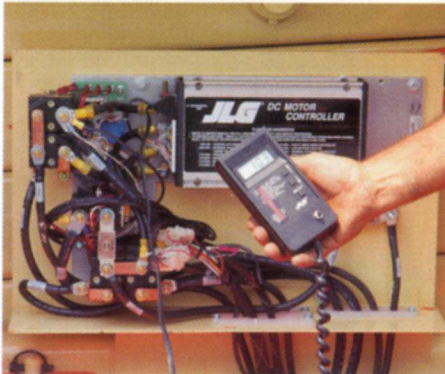
## Efficient Electric Drive System

High efficient, direct electric drive is provided by dual traction motors via planetary reduction hubs. A solid-state motor controller provides proportional speed control with "ramp" on/off. Drive system components are neatly arranged in a separate compartment with a hinged cover for ease of service access.

# PERFORMANCE FEATURES

## Electronic Calibrator For Monitoring Of Machine Settings

All machines functions can be calibrated at one convenient location, using the optional electronic calibrator. No need to manually adjust electrical settings. This tool provides an accurate means for monitoring machine settings.



## Standard Features Include:

1.2 m (4 ft.) Roll Out Deck Extension, Fold Down Hand Rails, Fully Proportional Direct Electric Drive, Variable Speed Control, Removable Control Box, Foam Filled Tyres, Eight 6V/245 amp hr Batteries, Hourmeter, Manual Descent Pump

## Available Options

110 V AC Wiring To Platform, Work Lights, Battery Discharge Indicator/LED Digital Hourmeter, Horn, Non-marking Tyres, Eight 6V/370 amp hr Batteries, Extra Battery Boxes With Batteries And Cables, EE Rating, Wheel Covers, 5 Degree Tilt Indicator Light And Alarm, Travel Alarm, Descent Alarm, All Motion Alarm, Flashing Amber Beacon



## 25% Gradeability

Both models feature gradeability up to 25%, which allows for travel to and from worksites or when traversing on in-plant ramps or uneven surfaces.



## Ground Control Station With Hour Meter

Ground control station is housed within a recessed cutout for protection from possible damage, and includes a main key selector switch, platform/ground selector, safety enable button and lift function switch. An hour meter is also included.

## Variable Speed Control

A separate control provides variable speed control for lift and descend functions.



## The JLG 1 & 5 Warranty

JLG Industries, Inc. backs our products with our exclusive "1 & 5" Warranty. We provide coverage on all products for one (1) full year and cover all specified major structural components for five (5) full years. Due to continuous product improvements, we reserve the right to make specification and/or equipment changes without prior notification. This machine meets or exceeds applicable OSHA Regulations in 29 CFR 1910.67, 1926.451 (F), 29 CFR 1926.556, ANSI A92.6-1990, and CSA Standard B354.2 as originally manufactured for intended applications.



## JLG Industries (Europe)

A Division of JLG Industries, Inc.  
Kilmartin Place, Tannochside Park,  
Uddingston, G71 5PH, Scotland  
Tel: 01698 811005  
Fax: 01698 811055

Internet: <http://www.jlg.com>  
e-mail address: [europe@jlg.com](mailto:europe@jlg.com)

